

EMAIL:

GRASP@temple.edu

WEB:

sustainability.temple.edu/GRASP

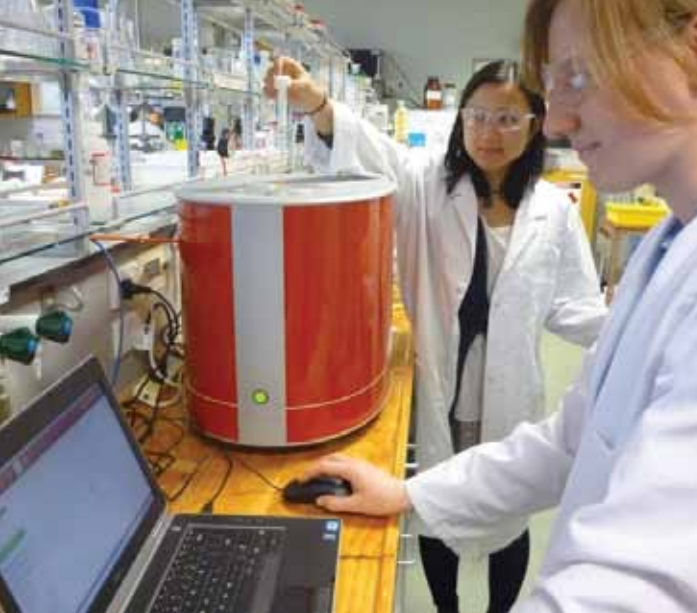


The Temple University Graduate Research Award Sustainability Program (GRASP) advances the university's goal of expanding sustainability research by providing funding to a graduate student research project focused on sustainability.

PROGRAM OVERVIEW



**GRADUATE
RESEARCH
AWARD
SUSTAINABILITY
PROGRAM**



Projects must have a research or implementation component and address sustainability on Temple's campus or in the surrounding community. Projects that address urban sustainability issues will also be considered. Some examples of sustainability related research projects include, but are not limited to: energy reduction, waste minimization, sustainable food options, transportation initiatives, community awareness, health, education and research to inform policy.

PROJECT CRITERIA



Applicants are required to be enrolled in a Temple graduate degree program both at the time of proposal submission and the following academic year (the award period). Applicants must identify a faculty mentor prior to application submission. The faculty mentor should be available to provide guidance throughout the award period.

Applicants from non-STEM majors are especially encouraged to apply.

ELIGIBILITY

The award consists of \$3,000 to the awardee and \$500 to the faculty mentor. The award will be issued at project completion upon submission of required documents.

Project funds may be applied to the following activities:

- Materials or products required to implement the project;
- Professional work, installation, or design;
- Research and testing or monitoring equipment;
- Student wages.

Expectations of Grant Recipient Report:

Upon completion of the project, the award recipient must provide a report. For a research-focused project, the report should be of publishable quality for an industry journal (such as a technical article or white paper). For projects with an implementation component, the report should summarize the project and include results and photos. The report will be made publicly available on the Office of Sustainability website.

Participation in Campus Sustainability Week:

During the award period, the award recipient must participate in the fall or spring Campus Sustainability Week either with an educational presentation or demonstration.

Presentation: During the spring semester of the award period, the award recipient must conduct a presentation to the Sustainability Advisory Group.

THE AWARD